



MONTHLY MEMBERSHIP PROGRESS REPORT

District 18 L

Results as of: 10/31/2016

GMT: HARVEY WHITLEY

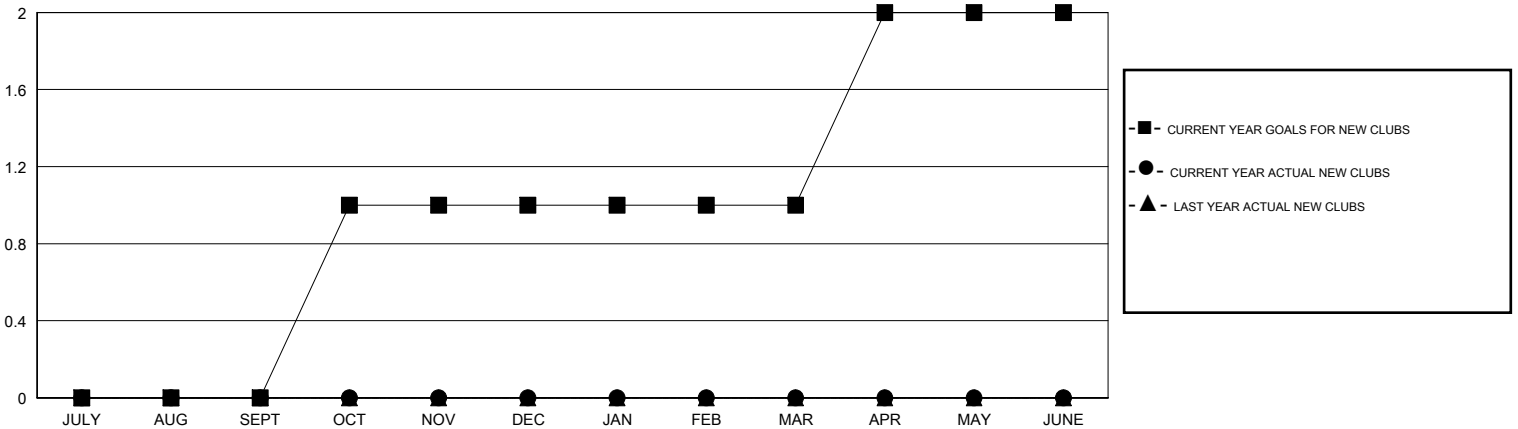
LOCATION GEORGIA

GMT CA 1

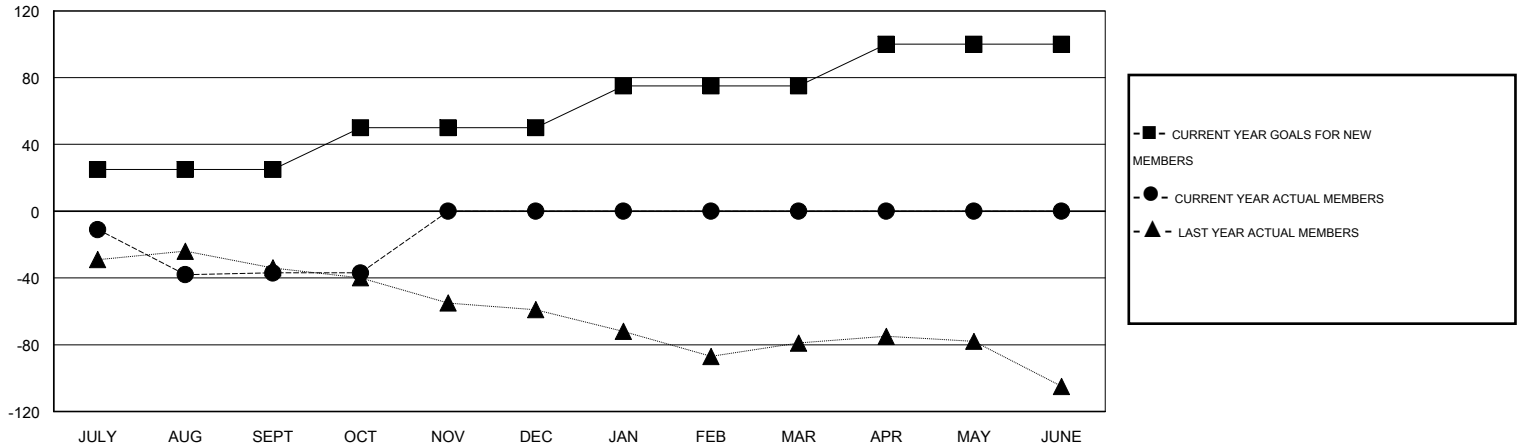
Clubs				
RESULTS FOR 2016-2017				
QUARTER	NEW CLUB GOAL	NEW CLUBS	DROPPED CLUBS	NET GAIN/LOSS
JULY/AUG/SEPT	0	0	0	0
OCT/NOV/DEC	1	0	0	0
JAN/FEB/MAR	0	0	0	0
APR/MAY/JUNE	1	0	0	0

Members				
RESULTS FOR 2016-2017				
QUARTER	NEW MEMBER GOAL	CHARTER AND NEW MEMBERS ADDED	DROPPED MEMBERS	NET GAIN/LOSS
JULY/AUG/SEPT	25	59	96	-37
OCT/NOV/DEC	25	4	4	0
JAN/FEB/MAR	25	0	0	0
APR/MAY/JUNE	25	0	0	0

GOALS AND ACTUAL NEW CLUBS CUMULATIVE



GOALS AND ACTUAL MEMBERS CUMULATIVE



DROPPED CLUBS: 0

21 CLUBS OF 48 ADDED 1 OR MORE NEW MEMBERS

GENDER DISTRIBUTION	
MALE	877 (65.59%)
FEMALE	460 (34.41%)

DROPPED MEMBERS	
DECEASED	8
CLUB CANCELLED	0
OTHER	92
TOTAL	100

[CLICK HERE FOR HEALTH ASSESSMENT DATA](#)

FAMILY UNIT MEMBERS	246
HEAD OF HOUSEHOLD	119
NON-HEAD OF HOUSEHOLD	127